

CATALOGUE FOR FIBER DISTRIBUTION FRAMES CWFO0735A

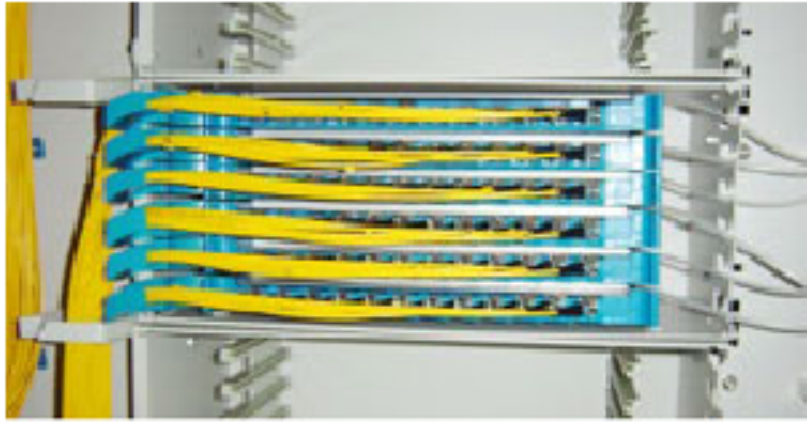
The frame is made from good quality stainless steel and deformed aluminum alloy and treated with galvanizing, oxidation and plastics spraying workmanship with solid structure and pleasing appearance.

- Fully-closed structure with the advantages of good performance of dust-proof, pleasing and neat appearance. There is enough fiber distribution, storage space, adequate semicircle fiber hanging hooks and fiber winding trays so as to facilitate management and operation.
- Big capacity and high density: 7~10 optical cables can be inlet with a capacity of 72 cores/unit, 864 cores (12 units)/frame (2600 mm high).
- Fully operated at front, convenient maintenance.
- Curvature radius 40 mm.
- Cable inlet device can be at the top or the bottom of the frame subject to different inlet way of cable. It is suitable for both common cable and ribbon type cable. There are reliable cable fixture cover and earth protection device.
- 12-core integrated splice and distribution module is adopted. Fiber separation hook can be disassembled so as to fit for both wide and narrow structure frame. It is suitable for FC or SC adapter. The installed adapter is 40° inclining to operation surface to facilitate installation and protect eyes.
- Pull-out-and-push-in worktable is provided for convenient operation.
- Plastics is of flame-retardant material.



Splice and Distribution Unit

- Each unit accommodates 6 pieces of 12-core integrated splice and distribution module with a capacity of 72 cores.
- Reliable position and limit device is provided for the module in the unit. The module can be removed out of unit for easy operation and maintenance.
- Distinct fiber number label is provided.
- Unit design without unit door.
- One work table is provided if one unit reaches 6 pieces of 12-core integrated modules for splice and distribution.
- Removable fiber separation hook is provided for integrated module for user to select.

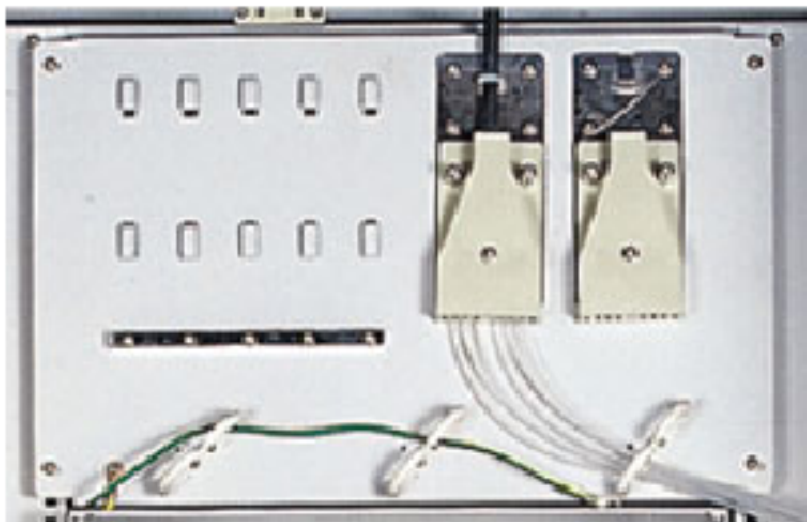


Splice and distribution unit

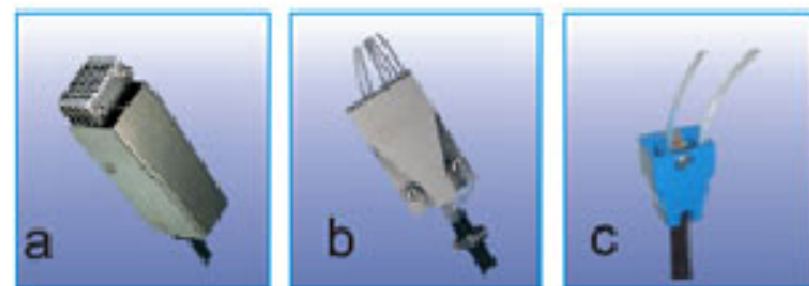


Optical Cable Inlet Unit

- Optical cable inlet unit is used for cable fixture and earth protection for cable reinforcement.
- The inlet unit can be mounted either at the top or the bottom of the frame with the advantage of flexible configuration.
- Several kinds of optical cable fixture protection devices are provided for selection (two categories: under or above 144 cores).



Optical cable inlet unit



Optical cable fixture protection device

Dimension:

| Dimensions (H * W * D)mm | Modules (72FO each) | Capacity (FC) | Capacity (SC and LC) |
|----------------------------|---------------------|---------------|----------------------|
| 2600 * 840 * 300 | 12 | 864 FO | 1728 FO |
| 2200 * 840 * 300 | 8 | 576 FO | 1152 FO |
| 2000 * 840 * 300 | 7 | 504 FO | 1008 FO |
| 2600/2200/2000 * 600 * 300 | 4 | 288 FO | 576 FO |
| 2600/2200/2000 * 300 * 300 | 3 | 144 FO | 288 FO |

COPYRIGHTS BY NINGBO PANS TECHNOLOGIES INC 2002-2006

ADD: 256th, Gaitong Road, Qiugai Industrial Park, Ningbo 310005, China

<http://www.pans-telecom.com> <http://www.cheerwe-telecom.com>

E-mail: sales@cheerwe-telecom.com info@cheerwe-telecom.com

PANS TECHNOLOGIES is Now a Part Of Cheerwe Telecom Group