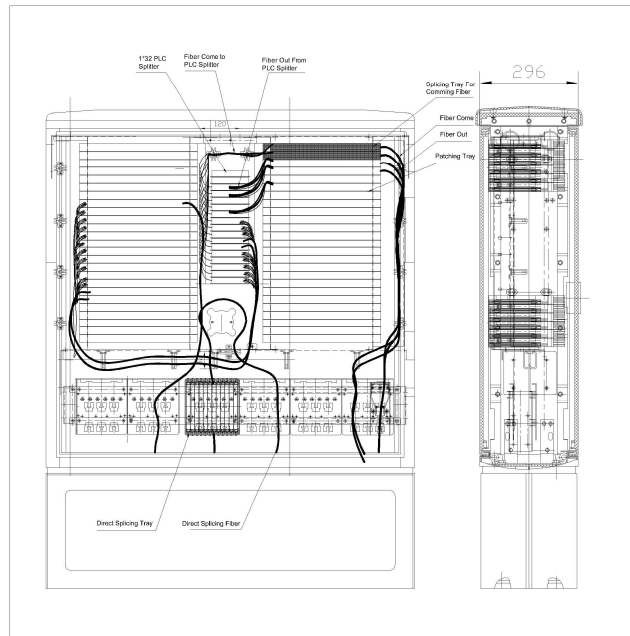


NGC-Next Generation FDH Cabinet

This Cabinet is used in Street, Used as Fiber Distribution Hub



Installation Guide For NGC

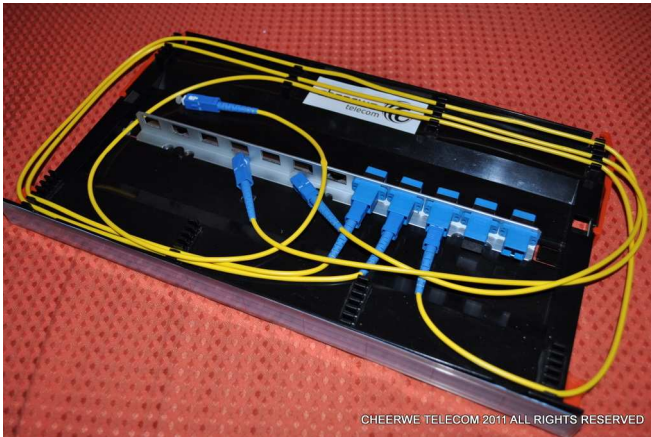
1. Installed with 2 Vertical lines, each line with 26Pcs Trays.
2. Direct Splicing Tray-Used for the Coming Fiber Cable, Fiber Cable coming to the Cabinet, then Spliced inside This tray with the "Out Cable". "Out Cable" go out Directly.
3. Patching Tray-Contains 16Pcs SC/APC Adapters, Patch Cord and Fanout Pigtails could be connected Through SC/APC Adapters.
4. Splicing Tray-Have 16 Positions, Fiber splicing Pigtails Here, pigtail go to patch tray, and connect with 1*32 PLC Splicing Tray also be available For Mechanical Splicer.

Components For the NGC

- 1)..1Pcs Cabinet, Material Fiber Reinforced Polyester(FRP), IP65 Standard
- 2).2 Verticals inside Frame, 26Pcs Trays in each Line, Total 52Pcs Tray
- 3).38Pcs Patching Trays, 12Pcs SC/PC Adapters in Each Tray, Total For 456 Cores
- 4).1Pcs Splicing Tray For Splicing Fiber Cable To 15Pcs PLC Splitter,
13Pcs Splicing Tray For Splicing Pigtails out From Patching Tray to Out Fiber Cable
Splicing Tray also could be available For Patch Cord Storage.
Total For 14Pcs Splicing/Storage Tray
- 5).15Pcs 1*32 Fanout PLC Splitter
- 6).6Pcs Direct Splicing Tray

NGC-Next Generation FDH Cabinet

This Cabinet is used in Street, Used as Fiber Distribution Hub



12 Core Patch Tray SC type



16 Core Splice Tray/Fiber Storage Tray

NGC-Next Generation FDH Cabinet

This Cabinet is used in Street, Used as Fiber Distribution Hub



Direct Splicing Tray



32 Core Fanout PLC Splitter